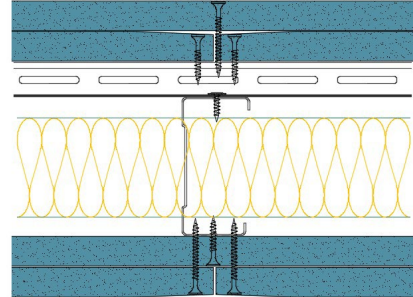


## RB70-K-60(50) - SPEEDLINE System Data Sheet - Version V1 (24-10-23)

SPEEDLINE 70mm 'C' Stud Partition with Resbar  
 @600mm Ctrs, with 2x Knauf 15mm Soundshield  
 Plus each side, 50mm APR



### System Performance Breakdown

Fire Resistance:

BS476 Part 22:1987:

Test Ref & Date or Applied Ref & Report:

Max Height:

Thickness:

Duty Grade: BS 5234: Part 2:1992:

Sound Insulation:

**120/120 Minutes (Integrity/Insulation).**

**BMT/FEP/F14077 - BRE Report P102396-1011B**

**Refer to Speedline Specification Clause**

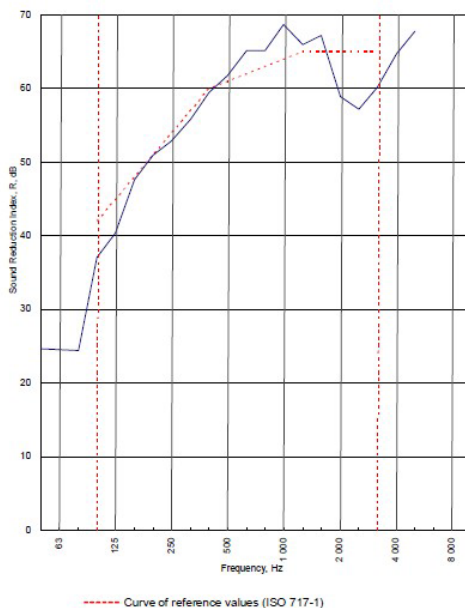
**148 mm.** (At Base Track, Excluding Finishes)

**Severe - Annexes A-F**

**61  $R_w$ dB, -7Ctr** Date Tested or Assessed Against - 01/11/2012


Test Code:  
H18025AA  
Test Date:  
01/11/2012


Freq. Hz	R dB
50	24.7
63	24.5
80	24.4
100	37.1
125	40.3
160	47.7
200	51.0
250	52.9
315	55.8
400	59.5
500	61.7
630	65.2
800	65.2
1 000	68.7
1 250	65.9
1 600	67.2
2 000	58.9
2 500	57.2
3 150	60.2
4 000	64.7
5 000	67.8
6 300	
8 000	
10 000	





Rating according to BS EN ISO 717-1:1997	<b><math>R_w</math> (C;Ctr) = 61 (-3;-7) dB</b>		
Evaluation based on laboratory measurement results obtained by an engineering method:	$C_{50-3150} = -8$ dB	$C_{50-5000} = -7$ dB	$C_{100-5000} = -2$ dB
	$C_{0,50-3150} = -19$ dB	$C_{0,50-5000} = -19$ dB	$C_{0,100-5000} = -7$ dB

TESTED AT ONE OF THE UKAS ACCREDITED LABORATORIES BELOW

B.T.C (H-Ref on Graph) 

B.R.E 

AIRO 

S.R.L 

Customer: Metsec plc Hepsec Division

BTC 18025A: Page 9 of 11



SPEEDLINE Drywall Systems, Adsetts House, 16 Europa View, Sheffield Business Park, Sheffield, S9 1XH.

Tel: 0114 231 8030.

Email: [enquiries@speedlinedrywall.co.uk](mailto:enquiries@speedlinedrywall.co.uk)

(As per the requirements set out in ISO/IEC 17025:2017 regarding test data the results stated have been carried out by voestalpine Metsec plc as part of the contract to supply Speedline Metal Sections to SIG Plc)